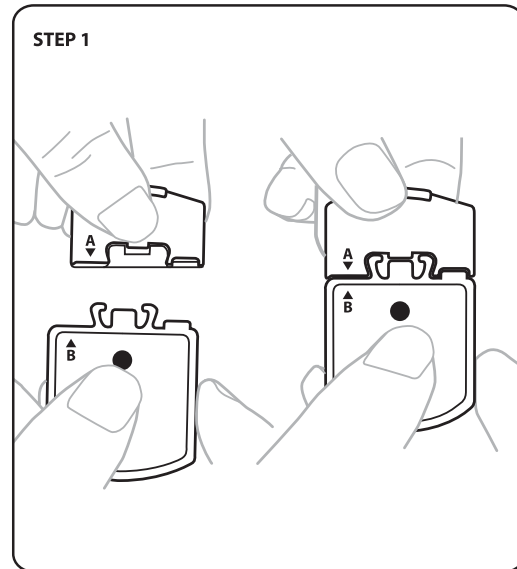
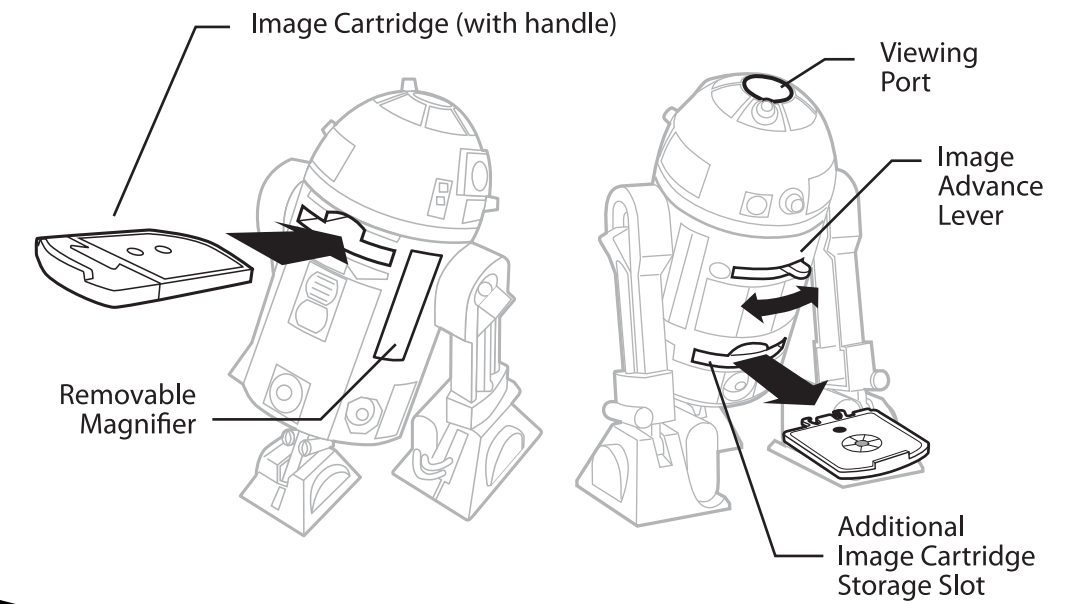
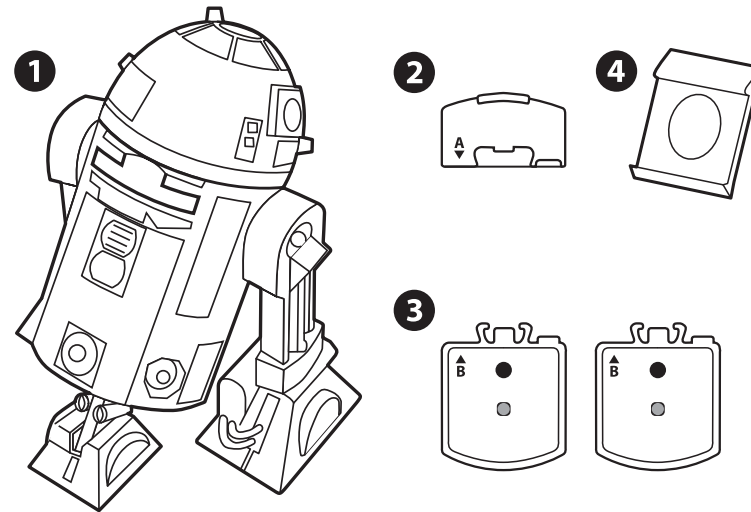
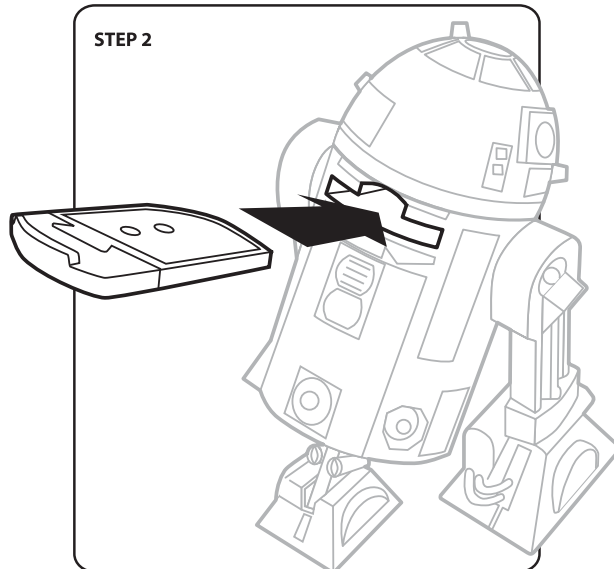


Uncle Milton
STAR WARS
SCIENCE
R2-D2™ MICROVIEWER

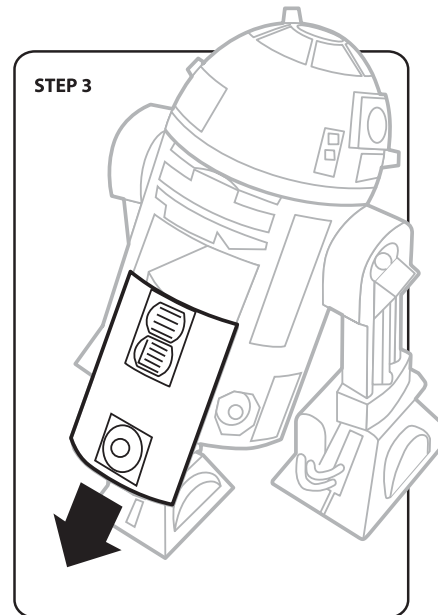
- PARTS INCLUDED**
- 1 R2-D2™ Microviewer
 - 2 1 Cartridge Handle
 - 3 2 Image Cartridges
 - 4 1 Hand-held Magnifier



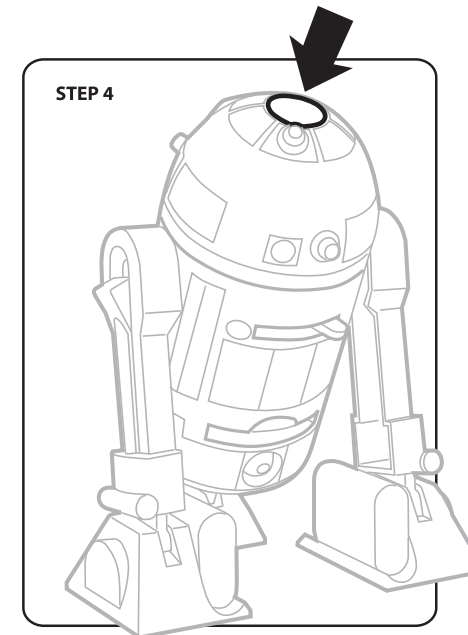
STEP 1
 Attach Cartridge Handle (A) to either Image Cartridge (B) as shown so that arrows point to each other.



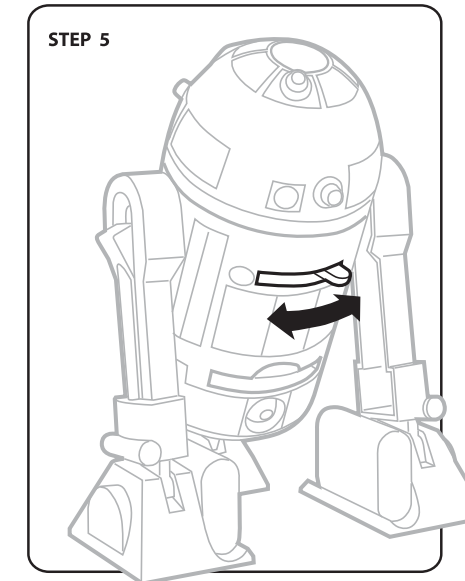
STEP 2
 Insert Image Cartridge (with Cartridge Handle attached) into the front slot.



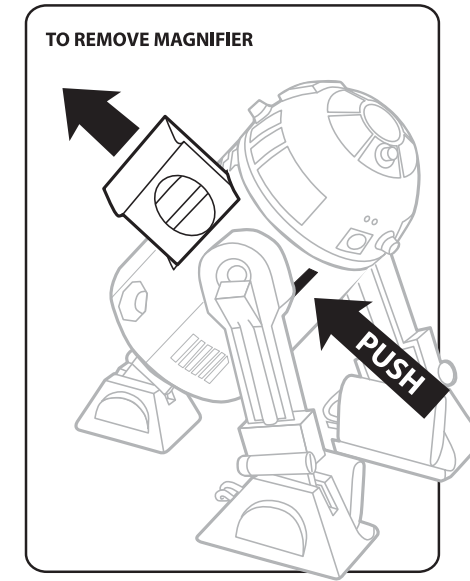
STEP 3
 Slide Front Panel down.



STEP 4
 Look into the viewing port to view the micro specimen.



STEP 5
 Slide the Image Advance Lever to view the next micro specimen.



TO REMOVE MAGNIFIER
 To remove the hand-held magnifier, push on the rear panel as shown and pull the magnifier out from the front.

Conforms to safety requirements of ASTM F963

WARNING:
 CHOKING HAZARD - Small parts.
 Not for children under 3 years.

Uncle Milton

© 2011 UMI. All rights reserved.
 © and ™ designate U.S. trademarks of Uncle Milton Industries, Inc. Westlake Village, CA 91362. Printed in China. Product and colors may vary.

© 2011 Lucasfilm Ltd. & © or ™ where indicated. All rights reserved.