



SOLAR SYSTEM IN MY ROOM™

6+

Batteries

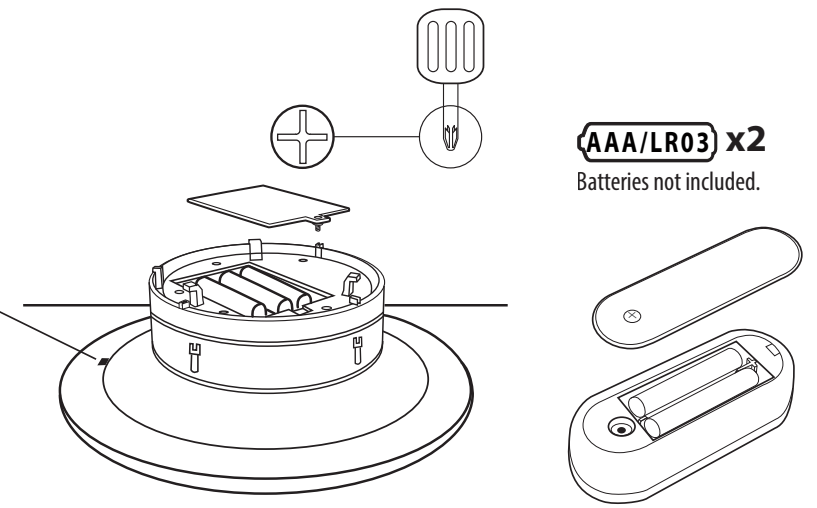
ON/OFF

AA/LR6 x3

Batteries not included.

AAA/LR03 x2

Batteries not included.



Assembly

Planet names are shown in English next to each slot.

Lower Rotation Ring

		Wire Length
•	Mercury	
○	Venus	
○	Earth	
○	Mars	

Upper Rotation Ring

		Wire Length
○	Jupiter	
○	Saturn	
○	Uranus	
○	Neptune	

BATTERY SAFETY INFORMATION

- Only adults should install and replace batteries.
- Non-rechargeable batteries are not to be recharged.
- Rechargeable batteries are to be removed from the toy before being charged.
- Rechargeable batteries are only to be charged under adult supervision.
- Different types of batteries or new and used batteries are not to be mixed.
- Batteries are to be inserted with the correct polarity.
- Exhausted batteries are to be removed from the toy.
- The supply terminals are not to be short-circuited.
- Do not mix old and new batteries.
- Do not mix alkaline, standard (carbon-zinc) or rechargeable (nickel-cadmium) batteries.
- Do not dispose of batteries in fire. Battery may explode or leak.
- Batteries should be recycled or disposed of as per state and local guidelines.

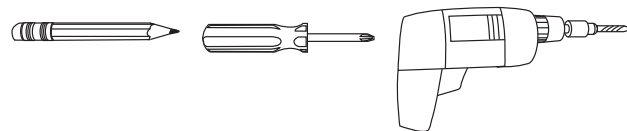
In an environment with electrostatic discharge, the product may malfunction. In this case, remove the batteries and wait for 5 minutes and then replace the batteries.

The normal function of the product may be disturbed by Strong Electro Magnetic Interference. If so, simply reset the product to resume normal operation by following the instruction manual. In case the function could not resume, please use the product in other location.

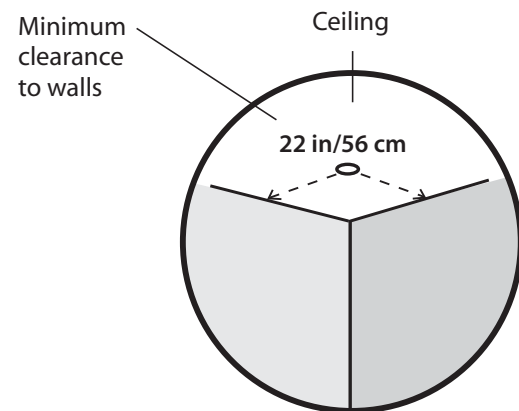
Mounting to Ceiling

Adult installation required

Tools required



Note: because of variations in construction, the included mounting hardware may not be suitable for all installations.



KEEP THESE INSTRUCTIONS FOR FUTURE REFERENCE — DO NOT DISCARD

Questions? Visit unclemilton.com

WARNING:
CHOKING HAZARD - Small parts/small ball(s).
Not for children under 3 years.

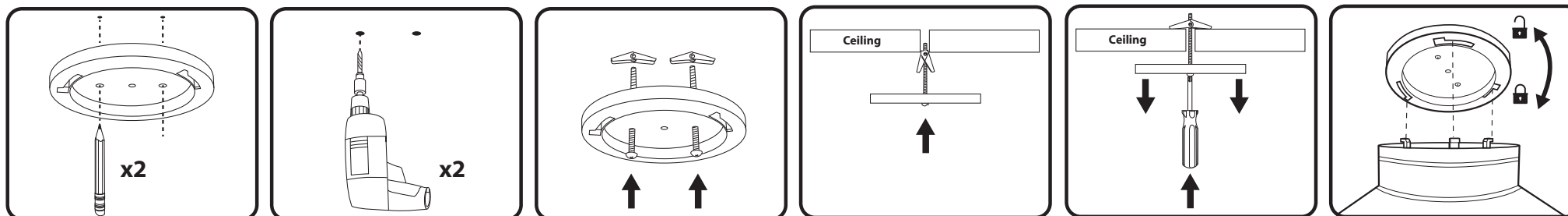
AVERTISSEMENT :
RISQUE D'ASPHYXIE - Pièces/Sphère (s) petite (s)
Non approprié aux enfants âgés de moins de 3 ans.

Do not hang the product above where a child sleeps.

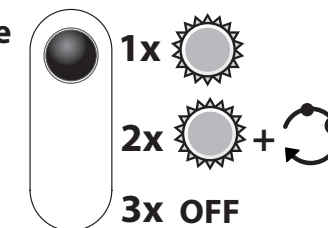
Caution: changes or modifications not expressly approved by the party responsible for compliance could void the user's authority to operate the equipment.

NOTE: This equipment has been tested and found to comply with the limits for a Class B digital device, pursuant to Part 15 of the FCC Rules. These limits are designed to provide reasonable protection against harmful interference in a residential installation. This equipment generates, uses and can radiate radio frequency energy and, if not installed and used in accordance with the instructions, may cause harmful interference to radio communications. However, there is no guarantee that interference will not occur in a particular installation. If this equipment does cause harmful interference to radio or television reception, which can be determined by turning the equipment off and on, the user is encouraged to try to correct the interference by one or more of the following measures:

- Reorient or relocate the receiving antenna.
- Increase the separation between the equipment and receiver.
- Connect the equipment into an outlet on a circuit different from that to which the receiver is connected.
- Consult the dealer or an experienced radio/TV technician for help.



Use



Uncle Milton

© 2017 TBDUM. All rights reserved.
® and ™ designate U.S. trademarks of Uncle Milton
P.O. Box 6281 Thousand Oaks, CA 91359 USA.
Printed in China. Product and colors may vary.