



HEARTS & FLOWERS

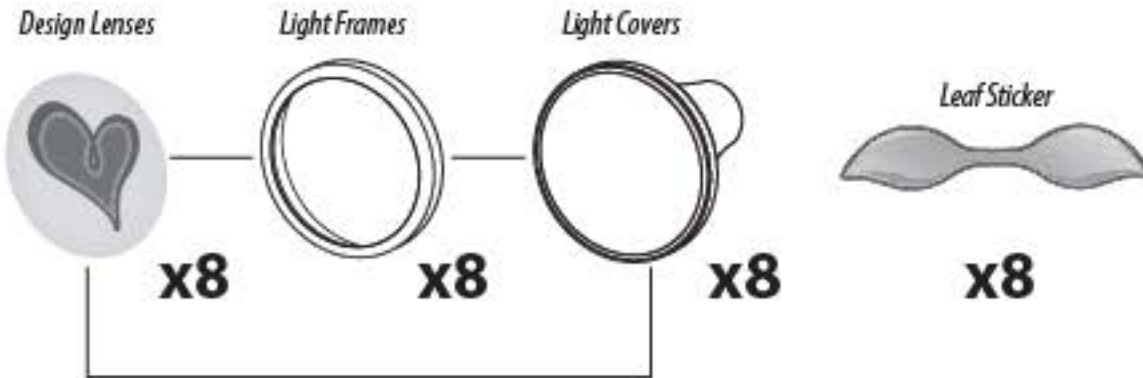
String Lights

Uncle Milton

6+
2380

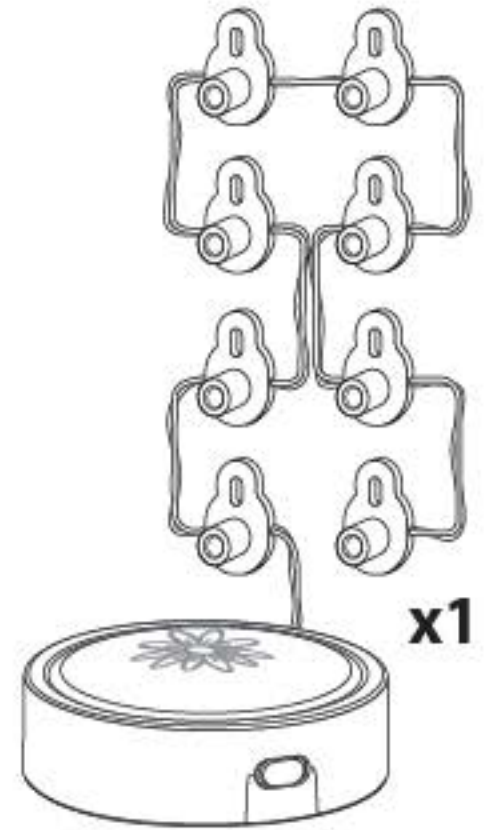
AA/LR6 x3

Batteries not included
Requires 3 x 1.5V AA/LR6 batteries



NOTE: These parts are pre-assembled.

Light String (with 8 Light Brackets and Light Vine Base Attached)



This is not a toy

Installing batteries into Light Vines base

Tool required - Small Phillips head screwdriver

1. Use a Phillips head screwdriver to remove the battery cover.
2. Insert 3 "AA" LR6 batteries. Make sure the "+" and "-" ends are inserted correctly, as indicated in the battery compartment.
3. Replace the cover and re-attach the screw.



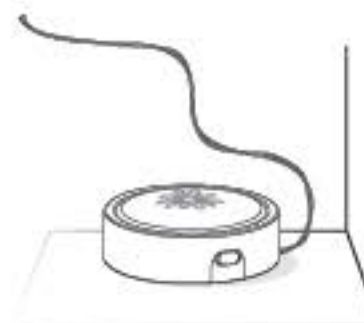
BATTERY SAFETY INFORMATION

- Only adults should install and replace batteries.
- Non-rechargeable batteries are not to be recharged.
- Rechargeable batteries are to be removed from the toy before being charged.
- Rechargeable batteries are only to be charged under adult supervision.
- Different types of batteries or new and used batteries are not to be mixed.
- Batteries are to be inserted with the correct polarity.
- Exhausted batteries are to be removed from the toy.
- The supply terminals are not to be short-circuited.
- Do not mix old and new batteries.
- Do not mix alkaline, standard (carbon-zinc) or rechargeable (nickel-cadmium) batteries.
- Do not dispose of batteries in fire. Battery may explode or leak.
- Batteries should be recycled or disposed of as per state and local guidelines.

Installing Your Light Vines

Before installing your Light Vines, consider the desired location for the base of the string lights. The base can attach to the wall or be placed on a flat surface as shown. Place it at a height and location that will allow easy access and reach to the on/off switch.

NOTE: To extend battery life, turn off product when not in use.



Base on flat surface installation



Base on wall installation



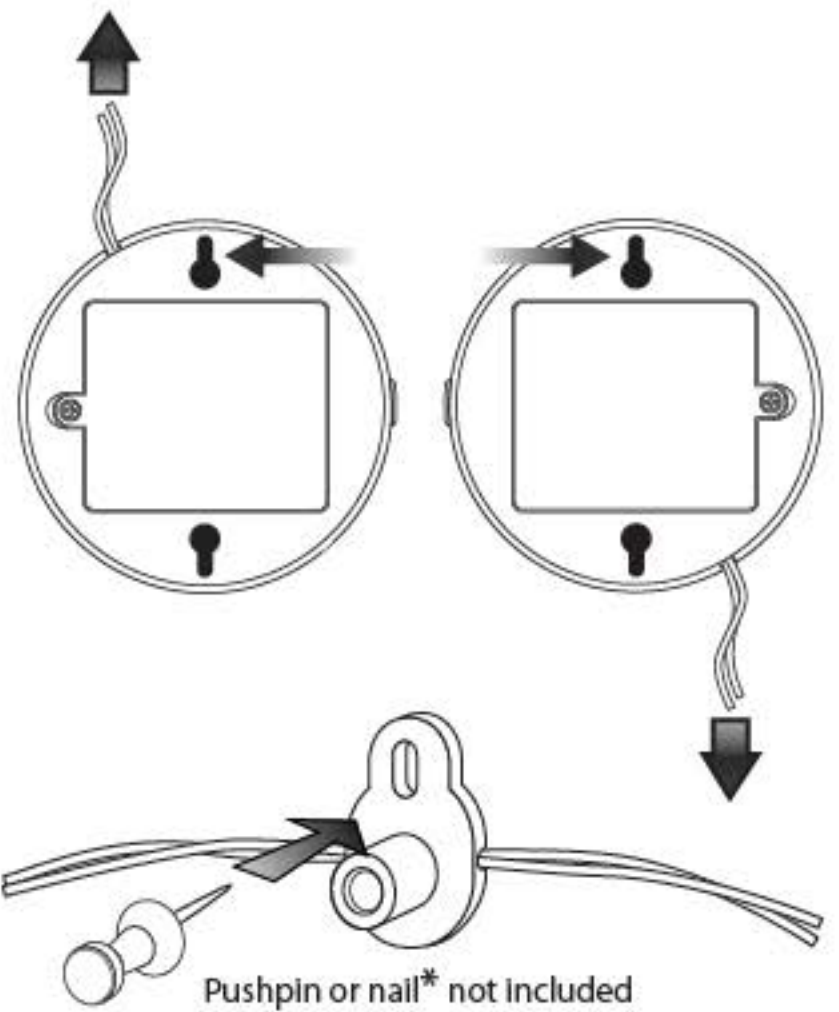
MANUFACTURED BY UNCLE MILTON INDUSTRIES, INC.
P.O. Box 6281, THOUSAND OAKS, CA 91359 USA
©2014 UMI. All rights reserved. ® and TM designate trademarks of Uncle Milton Industries, Inc.
MADE IN CHINA



This product and its batteries must be disposed of separately at your local waste recycling centre. Do not dispose them in your household waste bin.

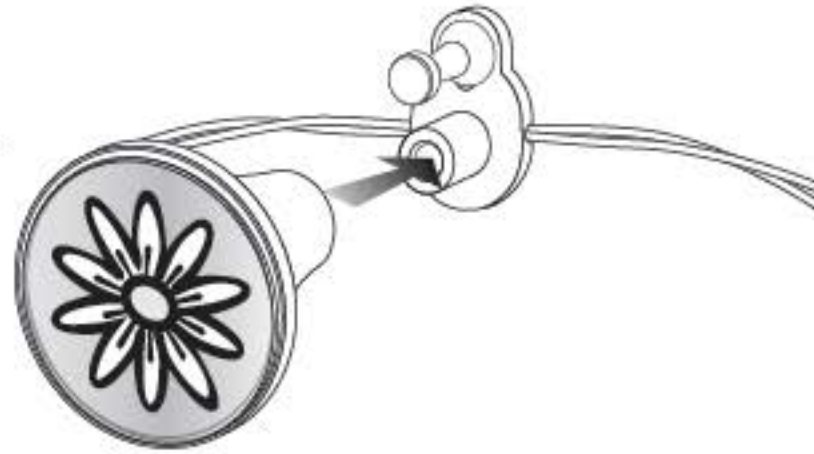
WARNING:
CHOKING HAZARD - Small parts.
Not for children under 3 years.

1. Place the base on a flat surface or attach the base to the wall using using a screw or nail (not included). Select one of the two hang holes based on the desired position of the wire leading from the base.



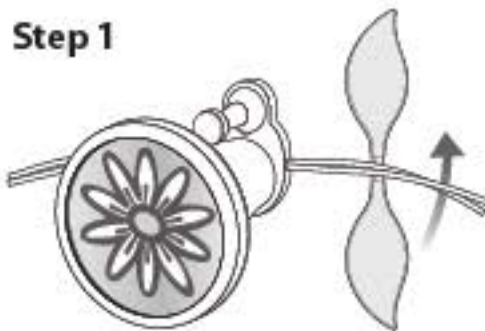
2. Hang each of the eight light brackets on your wall. Start with the one closest to the base and continue along the light vine. Use a pushpin or nail* to hang each bracket on the wall.

3. Attach the light covers.



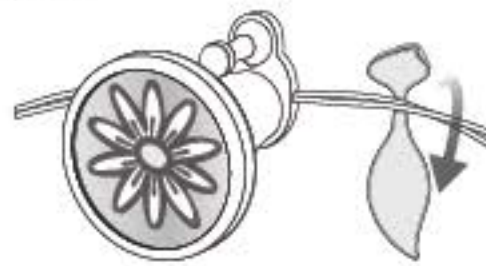
4. Peel and remove a leaf sticker from the sheet and place each leaf in different locations along the light vine using the following 3 steps:

Step 1



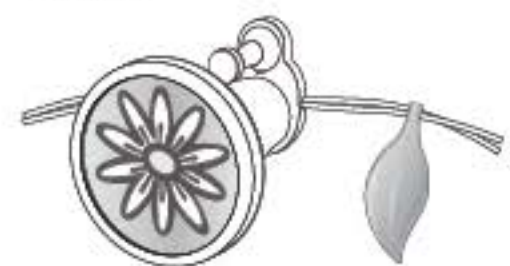
Slip the leaf sticker in back of the wires and center between the light units.

Step 2



Carefully align both the top and bottom part of the leaves and fold them together.

Step 3



Firmly press both parts of the leaf together to complete.

Operating Your Light Vine

To turn on and off, slide the switch on the side of the Light Vine base.

NOTE: To extend battery life, turn off product when not in use.



Decorate with other Light Vines

Get creative and decorate with other Light Vines all around your room. (Additional Light Vines sold separately)