



3+

# Instructions

**AAA/LR03** x2 Batteries not included  
Requires 2 x 1.5V AAA/LR03 batteries

**AA/LR6** x3 Batteries included  
Requires 3 x 1.5V AA/LR6 batteries

## Battery Installation

Tool required - Small Phillips head screwdriver  
Requires 3 "AA" alkaline batteries (included).  
Requires 2 "AAA" alkaline batteries (not included).

Adults should remove and dispose of all packaging, ties, and fasteners before use.

## Wall Mount

- Using a Phillips head screwdriver, remove the battery cover as shown.
- Insert 3 fresh "AA" batteries as indicated in the battery compartment and replace cover.
- IMPORTANT!** Unplug "Try Me" wires. Switch your Wall Friend to either high or low brightness before hanging on the wall.

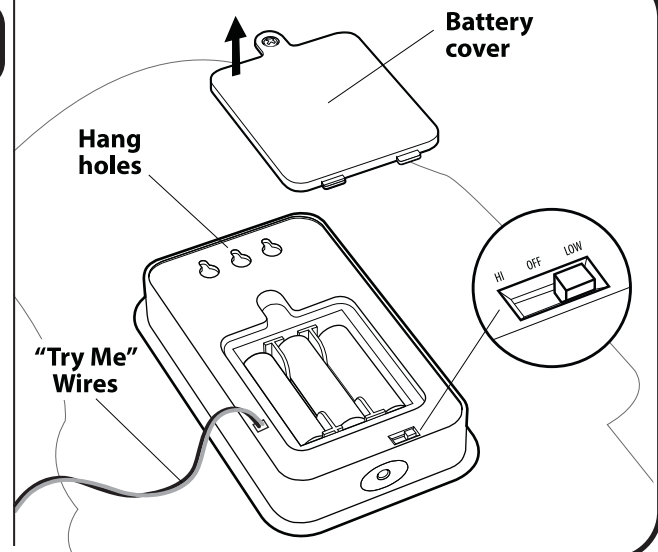
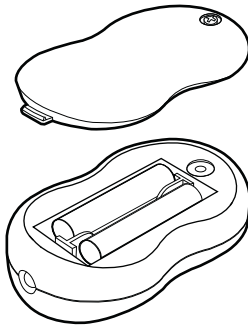
PLEASE NOTE: The unit will not activate without the remote control.

## Wall Installation

**Note:** Product is only intended to mount on a vertical wall.

## Remote Control

- Using a Phillips head screwdriver, remove the battery cover as shown.
- Insert 2 "AAA" batteries as indicated in the battery compartment and replace cover.



## Operation

### Light Setting

Slide the ON/OFF switch, located on the back of your Wall Friend, to either HI or LOW brightness.

NOTE: For best illumination, use in a darkened room.

### Wall Friend Activation

To activate your Wall Friend, press the button on your remote and hear your Wall Friend greet you. Then, each time you press the button you'll hear your Wall Friend say a different phrase. Press and hold the button to turn your Wall Friend off.

### Auto Off

Your Wall Friend will automatically shut off after approximately 15 minutes if there is no manual interaction.

NOTE: This equipment has been tested and found to comply with the limits for a Class B digital device, pursuant to Part 15 of the FCC Rules. These limits are designed to provide reasonable protection against harmful interference in a residential installation. This equipment generates, uses and can radiate radio frequency energy and, if not installed and used in accordance with the instructions, may cause harmful interference to radio communications. However, there is no guarantee that interference will not occur in a particular installation. If this equipment does cause harmful interference to radio or television reception, which can be determined by turning the equipment off and on, the user is encouraged to try to correct the interference by one or more of the following measures:

- Reorient or relocate the receiving antenna.
- Increase the separation between the equipment and receiver.
- Connect the equipment into an outlet on a circuit different from that to which the receiver is connected.
- Consult the dealer or an experienced radio/TV technician for help.

This device complies with Part 15 of the FCC Rules.

Operation is subject to the following two conditions:

- (1) This device may not cause harmful interference, and
- (2) This device must accept any interference received, including interference that may cause undesired operation.

Caution: changes or modifications not expressly approved by the party responsible for compliance could void the user's authority to operate the equipment.

## BATTERY SAFETY INFORMATION

- Non-rechargeable batteries are not to be recharged.
- Rechargeable batteries are to be removed from the toy before being charged.
- Rechargeable batteries are only to be charged under adult supervision.
- Different types of batteries or new and used batteries are not to be mixed.
- Batteries are to be inserted with the correct polarity.
- Exhausted batteries are to be removed from the toy.
- The supply terminals are not to be short-circuited.
- Do not mix old and new batteries.
- Do not mix alkaline, standard (carbon-zinc) or rechargeable (nickel-cadmium) batteries.
- Do not dispose of batteries in fire. Battery may explode or leak.

**KEEP THESE INSTRUCTIONS FOR FUTURE REFERENCE — DO NOT DISCARD**  
Questions? Visit [undemilton.com](http://undemilton.com)



MANUFACTURED BY UNCLE MILTON INDUSTRIES, INC.  
P.O. Box 6281  
THOUSAND OAKS, CA 91359 USA  
©2013 UMI. All rights reserved. ® and TM designate trademarks of Uncle Milton Industries, Inc.