



**“WHOSEVER HOLDS THIS HAMMER, IF HE BE WORTHY, SHALL POSSESS THE POWER OF...THOR”**

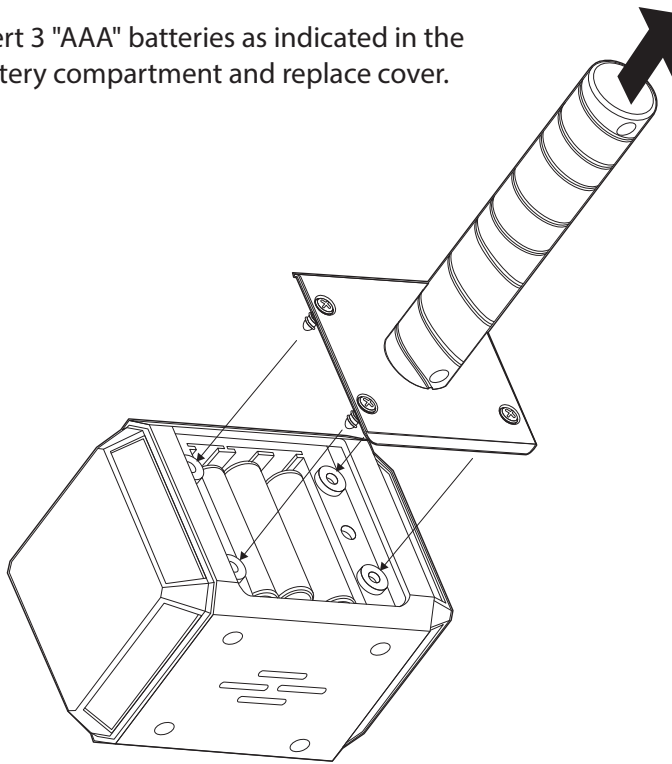
**PARTS INCLUDED**

- 1 Thor Hammer
- 1 Display Base
- 1 Energy Charge Coin

**BATTERY INSTALLATION**

Tool required - Small Phillips head screwdriver

1. Using a Phillips head screwdriver, remove the battery cover as shown.
2. Insert 3 "AAA" batteries as indicated in the battery compartment and replace cover.



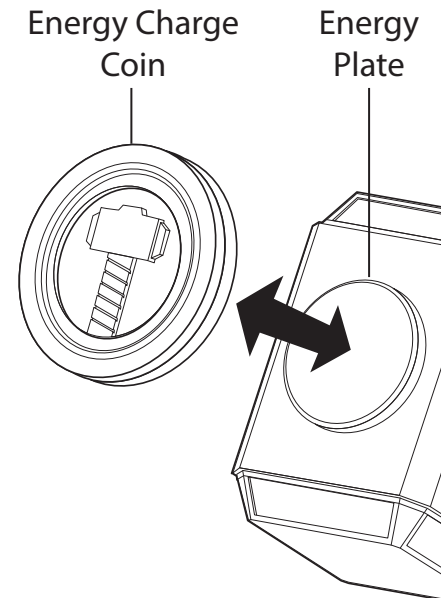
**ACTIVATING THOR’S HAMMER**

Now you can harness the power and energy of your hammer to find and detect metal. Then, watch as it flashes.

First, test the energy charge of your hammer. Touch the Energy Charge Coin to the Energy Plate on the back of Thor’s Hammer to the Energy Charge Coin. Watch as you hear the sound of Thor’s hammer.

Then, go on your own mission to detect other metal objects with Thor’s Hammer.

For each metal object you find, touch the Energy Charge Coin against it to see if it will activate with a charge. If you have successfully found iron-containing metal, also known as ferrous metal, this is the key ingredient needed to charge Thor’s Hammer.



NOTE: This equipment has been tested and found to comply with the limits for a Class B digital device, pursuant to Part 15 of the FCC Rules. These limits are designed to provide reasonable protection against harmful interference in a residential installation. This equipment generates, uses and can radiate radio frequency energy and, if not installed and used in accordance with the instructions, may cause harmful interference to radio communications. However, there is no guarantee that interference will not occur in a particular installation. If this equipment does cause harmful interference to radio or television reception, which can be determined by turning the equipment off and on, the user is encouraged to try to correct the interference by one or more of the following measures:

- Reorient or relocate the receiving antenna.
- Increase the separation between the equipment and receiver.
- Connect the equipment into an outlet on a circuit different from that to which the receiver is connected.
- Consult the dealer or an experienced radio/TV technician for help.

This device complies with Part 15 of the FCC Rules.

Operation is subject to the following two conditions:

- (1) This device may not cause harmful interference, and
- (2) This device must accept any interference received, including interference that may cause undesired operation.

Caution: changes or modifications not expressly approved by the party responsible for compliance could void the user’s authority to operate the equipment.

**BATTERY SAFETY INFORMATION**

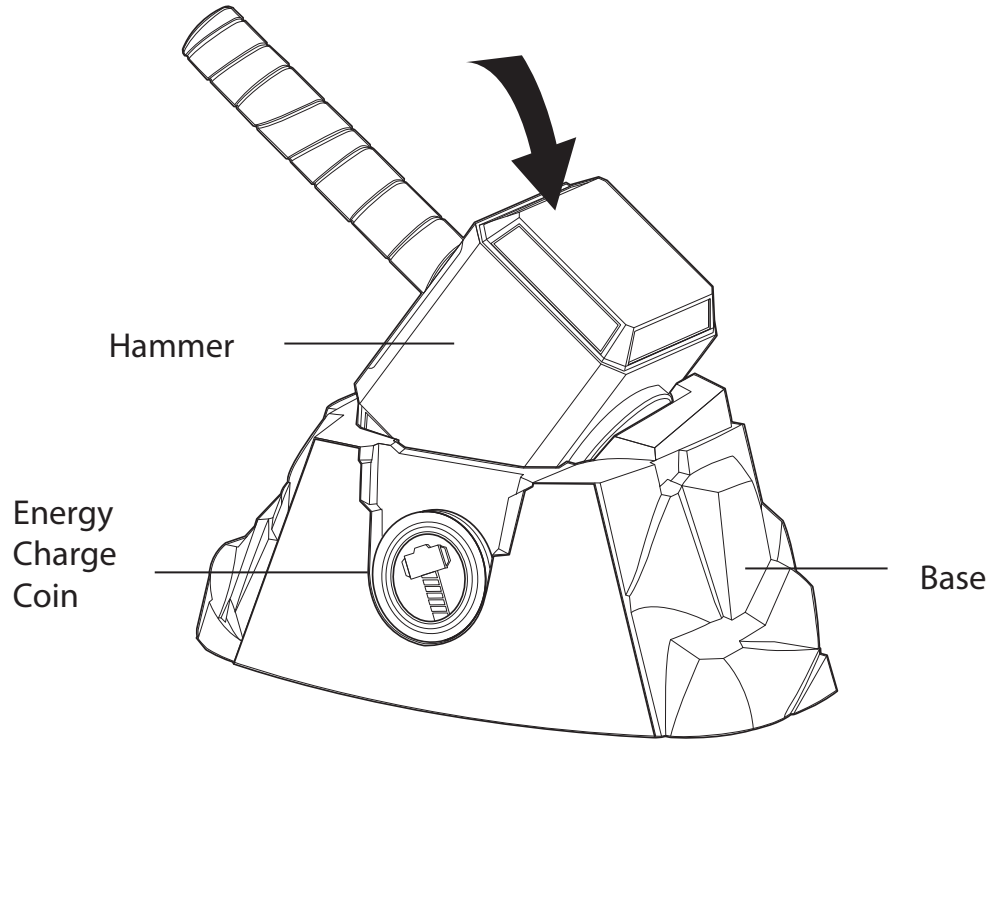
- Non-rechargeable batteries are not to be recharged.
- Rechargeable batteries are to be removed from the toy before being charged.
- Rechargeable batteries are only to be charged under adult supervision.
- Different types of batteries or new and used batteries are not to be mixed.
- Batteries are to be inserted with the correct polarity.
- Exhausted batteries are to be removed from the toy.
- The supply terminals are not to be short-circuited.
- Do not mix old and new batteries.
- Do not mix alkaline, standard (carbon-zinc) or rechargeable (nickel-cadmium) batteries.
- Do not dispose of batteries in fire. Battery may explode or leak.

# THOR LIGHTNING ENERGY HAMMER

**AAA/LR03 x3** Batteries not included  
Requires 3 x 1.5V AAA/LR03 batteries

## DISPLAYING THOR'S HAMMER

After returning from your mission, rest Thor's Hammer in its base and it will activate a final charge of energy. After the sound of the charge is complete, the light coming from the hammer will continue for approximately 15 minutes. Then, it will automatically shut-off.



KEEP THESE INSTRUCTIONS FOR FUTURE REFERENCE — DO NOT DISCARD  
Questions? Visit [unclemilton.com](http://unclemilton.com)

**Uncle  
Milton**

MANUFACTURED BY UNCLE MILTON INDUSTRIES, INC.  
P.O. Box 6281  
THOUSAND OAKS, CA 91359 USA  
©2013 UMI. All rights reserved. ® and TM designate  
trademarks of Uncle Milton Industries, Inc.  
MADE IN CHINA

© Marvel  
18019-0250-0513-V02